

# MACC Hub – overview and key updates

Adaptation Community of Practice meeting, 23 June 2026

# Introduction to the MACC Hub

# The MACC Hub Goals

- Improve how we communicate adaptation
- Draw from wellbeing & Just Transition approaches
- Apply systems thinking
- Address policy & legislative bottlenecks
- Increase accessibility of tools & data



# Long term outcomes



**Climate Adaptation Becomes Part of Daily Work** : Decision-makers at all levels integrate climate adaptation into routine decisions through training, tools, and practical support.

★ Number of decisions/actions influenced by training (via case studies at 6-12 months)



## **Recognition of Adaptation Urgency**

Leaders understand that climate adaptation is urgent, ongoing, and central to their role

★ % of workshop participants reporting sustained urgency at 6+ months post-workshop (via follow-up survey), PLUS qualitative evidence that adaptation is being discussed in organizational decisions



## **Accessibility & Usability of Adaptation Knowledge**

Practitioners and communities can easily find and use evidence on how to adapt.

★ Number of decisions/projects using MACC tools or information (via case studies)



## **Building a strong, cross-sectoral adaptation ecosystem**

Communities, researchers, businesses, and government work together on climate solutions. ★ Diversity of partners involved (sectors: grassroots, academic, public, private represented)

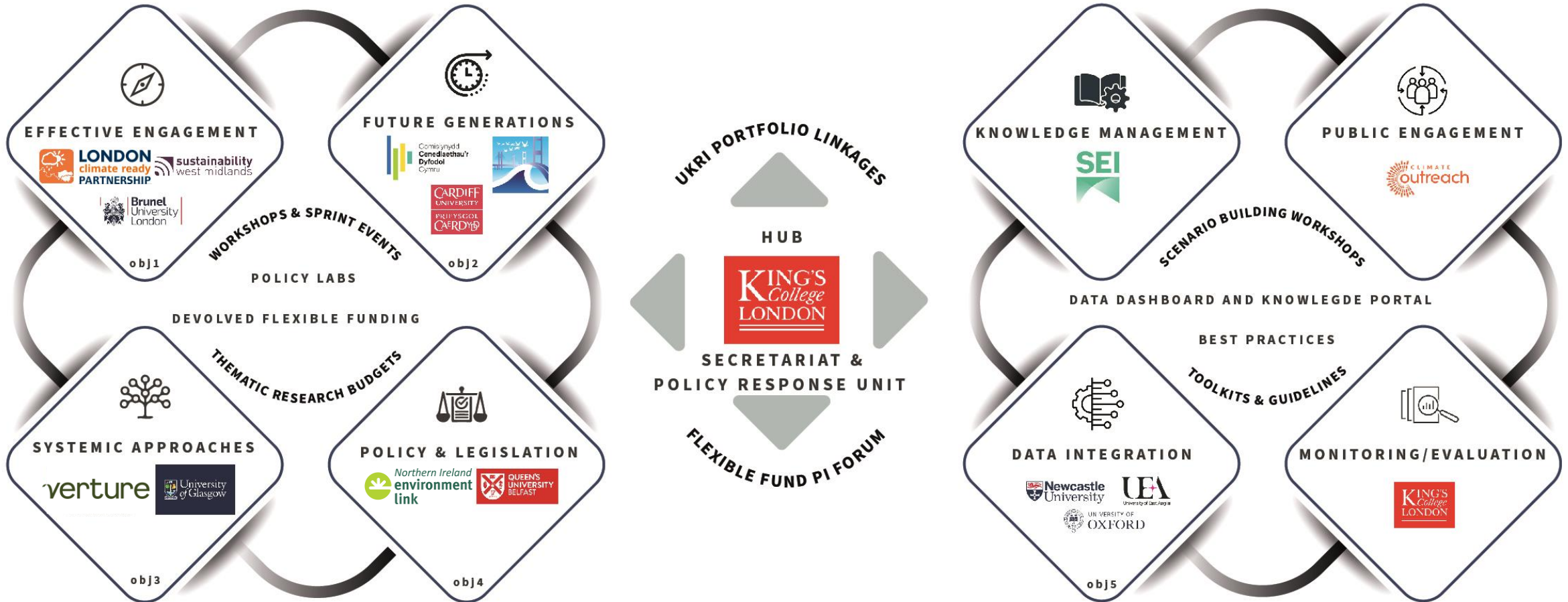


## **Centering Justice and Equity in Adaptation Governance**

Those most affected by climate change lead adaptation decisions and shape evidence.

★ % of Flexible Fund allocated to projects with explicit justice/equity objectives

# Partners involved..



# SWM Role

- We are the co-lead of the England spoke

*Which means we...*

- Lead on stakeholder engagement across England, outside London
- Lead on knowledge exchange across the MACC's activities
- Support many of the MACC's 16 work packages
- Provide synthesis and a non-academic eye over various outputs

# Our stakeholder engagement approach and planning conference

# England stakeholder plan

- First developed in our initial Engagement Plan which was essentially our **evidence base**.
- Then developed a Stakeholder Implementation Plan which focused more on exactly what we're actually planning to do.
- Thematic focus is mostly on **local planning policy** and the various co-benefits of embedding adaptation into this.
  
- We have:

Identified our key national influencers and local beneficiaries

Assessed stakeholder power and influence

Identified key co-delivery and intelligence partners (e.g. TCPA, MHCLG), i.e. experts in the field

Identified routes of engagement inside and outside of delivery requirements for MACC's WPs

Come up with an initial action plan to try and identify how MACC can break down barriers in the sector

# Our plan's objectives

1. Increase stakeholder awareness of how to use climate model outputs to support adaptation activities locally, either through strategies or direct delivery.
2. Generate a better understanding of the systems we operate within and how climate impacts cascade across and within those systems.
3. Develop greater skills in climate leadership and how they can be applied at a local level.
4. Improve awareness of climate adaptation pathways and approaches and how to ground them in an understanding of local vulnerabilities and impacts.
5. Encourage a better understanding of the policy gaps that exist and possible policy responses that could unlock greater action to adapt to increasing climate impacts at both a national and local level.
6. Raise stakeholder awareness and understanding of transformational adaptation as a guiding principle to inform future action.

**Primary aim: To help stakeholders to collaborate to better identify, assess, appraise, implement and evaluate place-based transformational adaptation options at the appropriate scale.**

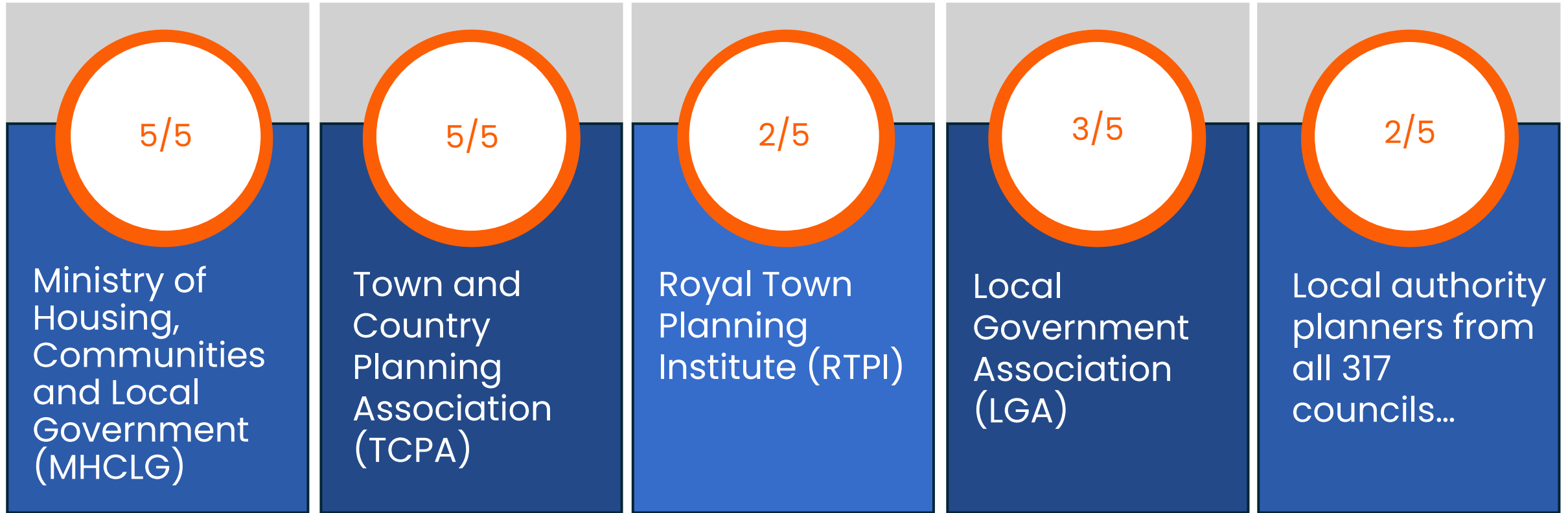
**Table 1: Evidence used as justification for our stakeholder priorities.**

Evidence	Examples
Robust and credible existing evidence bases	<ul style="list-style-type: none"><li>• CCRA3-IA</li><li>• National Adaptation Programme (NAP) 3</li><li>• Adaptation Reporting Power</li><li>• Place-based adaptation plans</li></ul>
Emerging evidence bases	<ul style="list-style-type: none"><li>• CCRA4-IA</li><li>• NAP 4</li><li>• MACC work package 1.1</li></ul>
Key publications and literature	<ul style="list-style-type: none"><li>• CCC's summary of adaptation progress</li><li>• Key policy documents</li><li>• Literature identified for MACC activities 1.1 and 3.1</li></ul>
Interviews with national policy or advisory organisations	<ul style="list-style-type: none"><li>• Defra</li><li>• Ministry for Housing, Communities and Local Government</li><li>• Climate Change Committee (CCC)</li><li>• Department for Health and Social Care</li></ul>
Interviews with sector experts	<ul style="list-style-type: none"><li>• Town and Country Planning Association</li><li>• Royal Town Planning Institute</li><li>• Greener NHS</li></ul>
SWM and LCRP direct experience	<ul style="list-style-type: none"><li>• Preparing adaptation plans</li><li>• Providing advice and producing guidance</li><li>• Advising on policy</li></ul>

# Why is planning a priority?

- We feel that there is a huge opportunity for embedding adaptation into planning policy and practice
- This is especially true given the Government's approach to 'shed loads of housing'
- New NPPF about to be published...
- Consideration through the planning process can benefit adapting many other 'sectors' and offer true co-benefits
  - Health
  - Biodiversity
  - Net Zero/ energy efficiency etc...

# Key stakeholders



## Our vision regarding planning within MACC

*To co-create the outputs needed to put climate adaptation at the heart of local planning policies and developments.*

# Adaptation and planning conference

The planning system – The UK's greatest adaptation opportunity?



## Why a conference?

- We don't want to assume what planners want/need in terms of support with adaptation **until we've engaged with them in-depth.**
- Hence why we're convening the Conference later this year.
- This will help to:
  - Inform the content of future WPs, especially the **Policy Labs** (more info to come)
  - Inform what other work we may want to spend the remaining 12-18 months of MACC doing to help breakdown barriers to adaptation being considered as the norm with planning policy and new developments.

# Adaptation and planning conference

The planning system – The UK's greatest adaptation opportunity?



## Logistics:

- Confirmed date – **6 October**
- Will take place online
- Primarily England focused
  - But case studies from other nations welcome/ encouraged
  - And content on what good looks like will be relevant to other nations
- Audience will be local planners and national planning policy setters and arm's length bodies (e.g. EA)
- The event will be co-developed with TCPA
- **Agenda** will include a mix of presentations, panel discussions, case studies and breakout workshops.

# Conference objectives

1

Consider the opportunities and barriers that national planning policy gives us towards the integration and acceleration of transformational adaptation within local planning policy.

2

Discuss how local planning and government reform may provide an opportunity for a stronger emphasis on adaptation within the planning system.

3

Clarify the role and expectations of local councils in terms of embedding adaptation into Local Plans and standards for new developments, and what support exists to enable this.

4

Showcase local, innovative practice on embedding adaptation into new developments, demonstrating what can be done within the existing policy landscape and resourcing constraints.

5

Gain your feedback to identify what outputs we can create within the MACC programme that can have result in accelerating transformational change.

# What will happen afterwards?

- Conference evaluation
- Work up the focus and structure of the Policy Lab (end of 2026)
- Analyse the notes and feedback to identify initial set of priorities that we could work up into practical outputs.
  - We don't yet know what these are; that's what the Conference is for!
- Co-creation of these with various partners especially TCPA and MHCLG
  - Potential for a working group to be set up to drive this forward?
  - Most challenging thing is people's time



# The policy labs

# What is a policy lab?

A Policy Lab is an approach that aims to narrow the gap between evidence and policymaking to improve outcomes and create change

- Aims to understand the barriers and constraints to change and use this to inform feasible, effective and acceptable policy and practice solutions.
- Structured day-long workshop comprising focused sessions that explore different aspects of an overarching question.
- Usually with a group of 15-25 participants, who rarely meet in their day-to-day roles – including research, policy, practitioner and experiential expertise – to collaboratively assess evidence, generate ideas and deliberate on how these can be taken forward.

# Design features

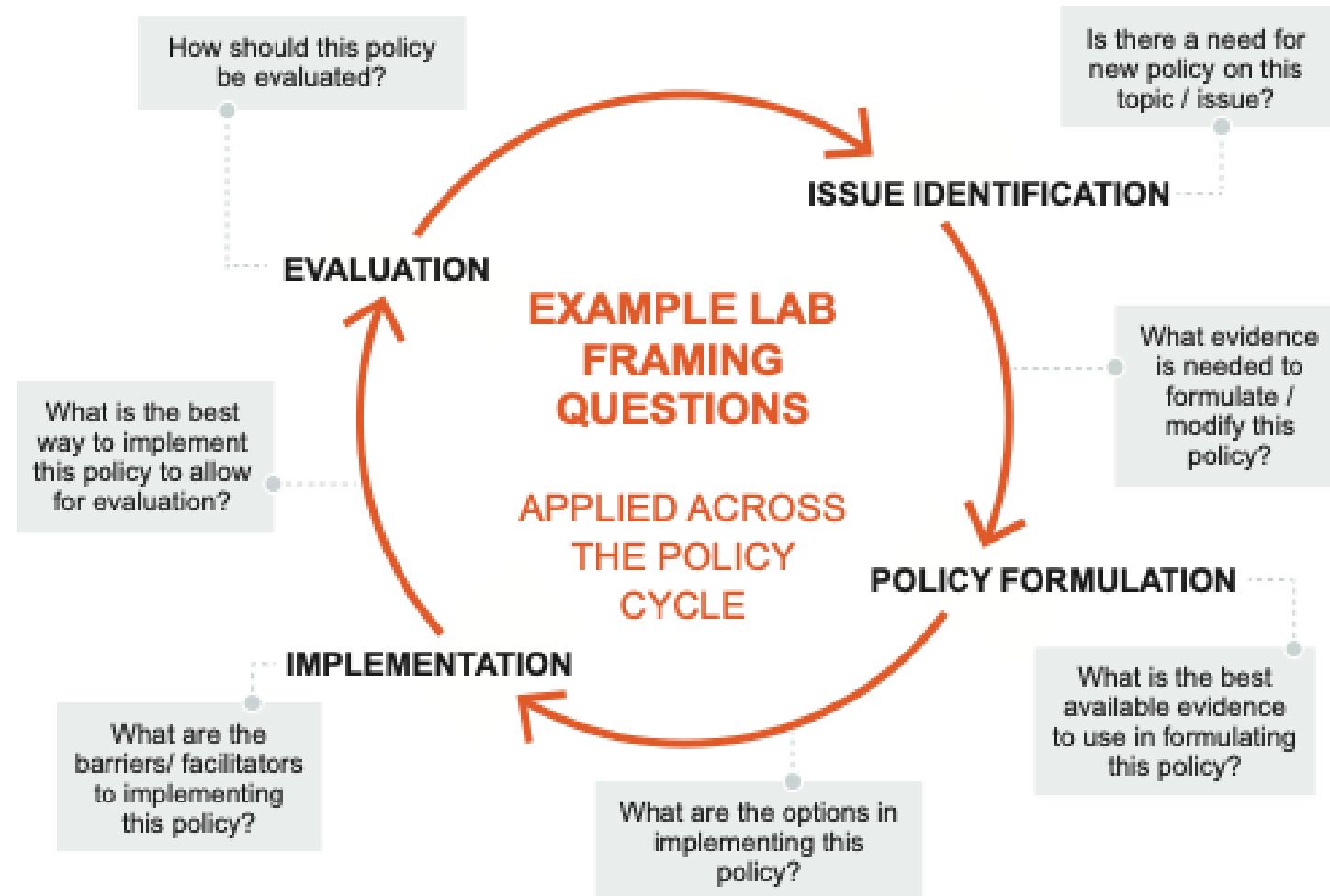
Focused on a central question that aims to fill an evidence gap

Situation assessed via desk research and consultation, and distilled into a briefing pack

Session combines breakout and plenary sessions, supported by interactive tasks

Discussions captured in a briefing note, co-produced with participants

See [Using Policy Labs as a process to bring evidence closer to public policymaking: a guide to one approach](#), Palgrave Communications 6: 101 (2020)



# Policy Labs in the MACC



Day-long workshops addressing specific policy bottlenecks and levers to adaptation – one held in each UK nation

Across the four workshops...

- England is expected to focus on planning, the focus for which will be driven by the outcomes of the conference.
- There will be variation on the topic of focus and stage of policy cycle targeted between each nation.
- Place-based focused in welcomed.
- Open as to who the most suitable stakeholder types are – but keen to bring in lived experience
- Keen to explore incremental learning / sharing between labs

**Each Lab will result in a short briefing note**

# MACC work packages and outputs emanating from selected ones

# 16 work packages

WP	Summary
<b>1.1</b>	<b>Adaptation barriers and levers and definition transformational adaptation</b>
<b>1.2</b>	<b>Training</b> focusing on weather data translation.
<b>1.3</b>	<b>Training</b> in adaptation systems thinking
<b>1.4</b>	<b>Public engagement</b> on adaptation - "How do different climate adaptation narratives resonate with different audiences across the UK, and what factors (e.g., perception of risk, lived experiences and values) influence their engagement, trust, and willingness to act?"
<b>2.1</b>	<b>Using climate data</b> – the NIRD tool
<b>2.2</b>	<b>Using climate data</b> – simplifying climate hazard and impact data so that users, especially councils and NHS, can better understand it and use it. There is a focus on the <a href="#">OpenCLIM tool</a> run by UEA.
<b>2.3</b>	<b>Knowledge Sprints.</b> These are short, sharp burst of work (2-4 weeks) to provide a specific missing piece of evidence.
<b>2.4</b>	<b>Pathways.</b> Bringing outputs from the whole of MACC together to identify where we can have most impact.
<b>3.1</b>	<b>MACC website development.</b>
<b>3.2</b>	<b>Policy labs.</b> A structured, collaborative workshop designed to tackle complex policy challenges at any stage of the policymaking process – whether identifying problems, formulating policy options, supporting implementation, or evaluating outcomes.
<b>3.3</b>	<b>Policy Response Unit,</b> addressing aspects of policy, legislation and regulation that hold back the adaptation vision.
<b>3.4</b>	<b>Synthesis on what works on adaptation.</b>
<b>4.1</b>	<b>Flexible Fund</b> development, funding to deliver actual on-the-ground adaptation. This WP focused on determining the scope of the fund.
<b>4.2</b>	<b>Flexible fund</b> delivery. This focused on promotion of the fund, assessing the applications and selecting the winners.
<b>4.3</b>	<b>Flexible fund</b> monitoring and evaluation.
<b>4.4</b>	<b>Research funding</b> to fill a research gap on adaptation.

# 1.1 Adaptation barriers and levers and defining transformational adaptation

## Key Research Questions:

### 1. What are the levers of change for adaptation in the UK and its regions (including any assessments of barriers or opportunities)?

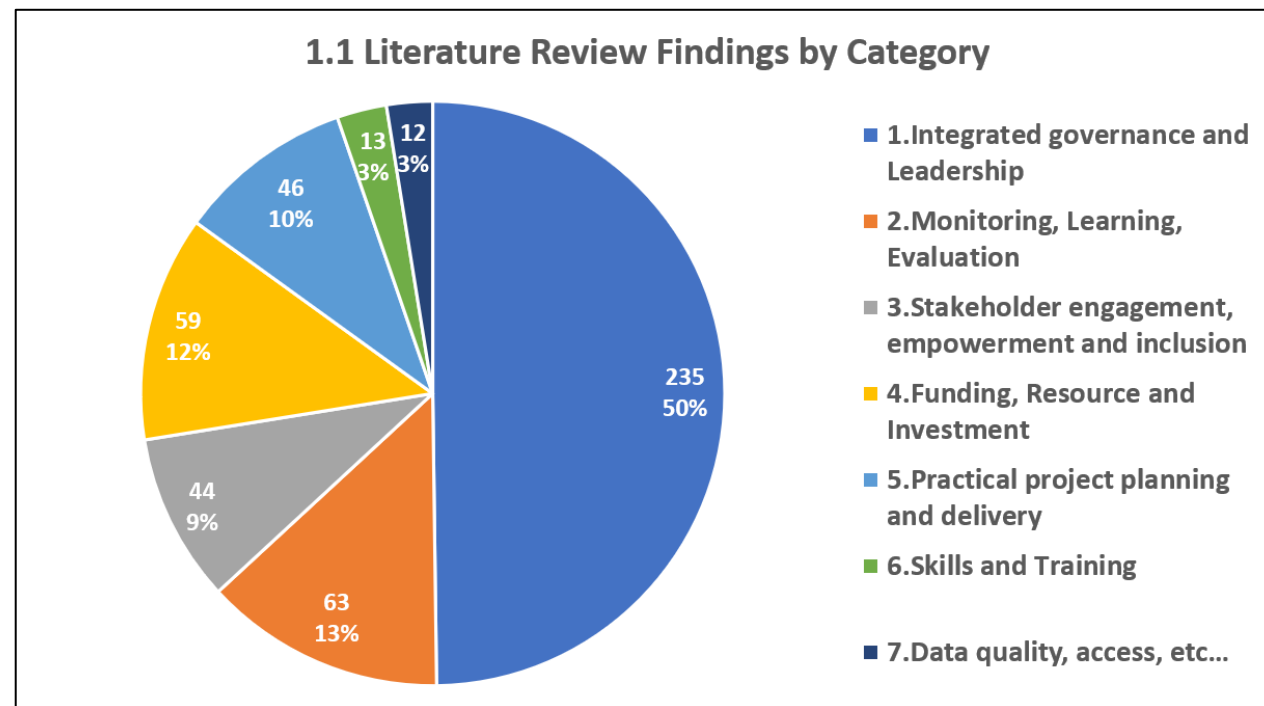
- **Goal:** Consensus list of levers and key actors that can be used to guide MACC Hub actions towards a roadmap for change in every part of the UK.

### 2. What guidance and examples are available on the topic of 'Transformational Adaptation' which can help us define it for use through the Hub?

- **Goal:** Sense of transformational adaptation which can substantively differentiate from iterative adaptation during the work of the hub, including considering potential for unintended consequences.

# 1.1 Evidence Gathered – Rapid Review

- **Evidence Gathered (MACC and Call for Evidence)** – 300+ sources
- **Literature Review Analysis – ('High Importance')**
  - Levers of Change – 46 sources
  - Transformational Adaptation – 11 Sources
    - (30 analysed in total)
- **Stakeholder Engagement**
  - Interviews – 19
  - Survey Responses – 74



# 1.1 Summary of survey findings: levers and barriers

34%

**Lack of funding  
/resource**

“Too much preoccupation with short term financial constraints...”  
“Legislation without resource.”

19%

**Lack of drivers,  
statutory requirements  
or accountability**

“No enforceable legislation to be able to really pick up pace on climate risks...”  
“Current policies don't legislate enough to make action a legal prerequisite.”

16%

**Siloed/Fragmented  
Systems**

“Connection between sectors is not seen or valued”  
“Lack of integration of climate change into all policies/ practice.”  
“The fragmented nature of adaptation responsibilities across departments creates confusion at local levels about ownership”

16%

**Lack of local  
support and bottom-up  
approaches**

“There is no support locally or regionally”  
“...don't legislate enough to put money down at the community level.”  
“Policies...driven from top down rather than nurturing bottom-up... solutions.”

14%

**Lack of  
urgency/prioritisation  
of adaptation**

“UK policies absolutely do not recognise the urgency of the situation that we face.”  
“We need UK level policies to place adaptation at the same level of importance as mitigation.”

# 1.1 Summary of survey findings: transformational adaptation

## Focus on vulnerability and inequality:

- *“Transformation is about getting under the skin of what **the root causes and the drivers** of those risks are in the first place. And **changing those systems**.”*
- *“Transformational would be that we actually **remove inequalities** in our society”*
- *“Transformation in our social infrastructure. So that's everything that **reduces vulnerability** or sets the level of vulnerability for people, communities, building sectors, businesses, the whole lot.*

## Raising the ambition of adaptation:

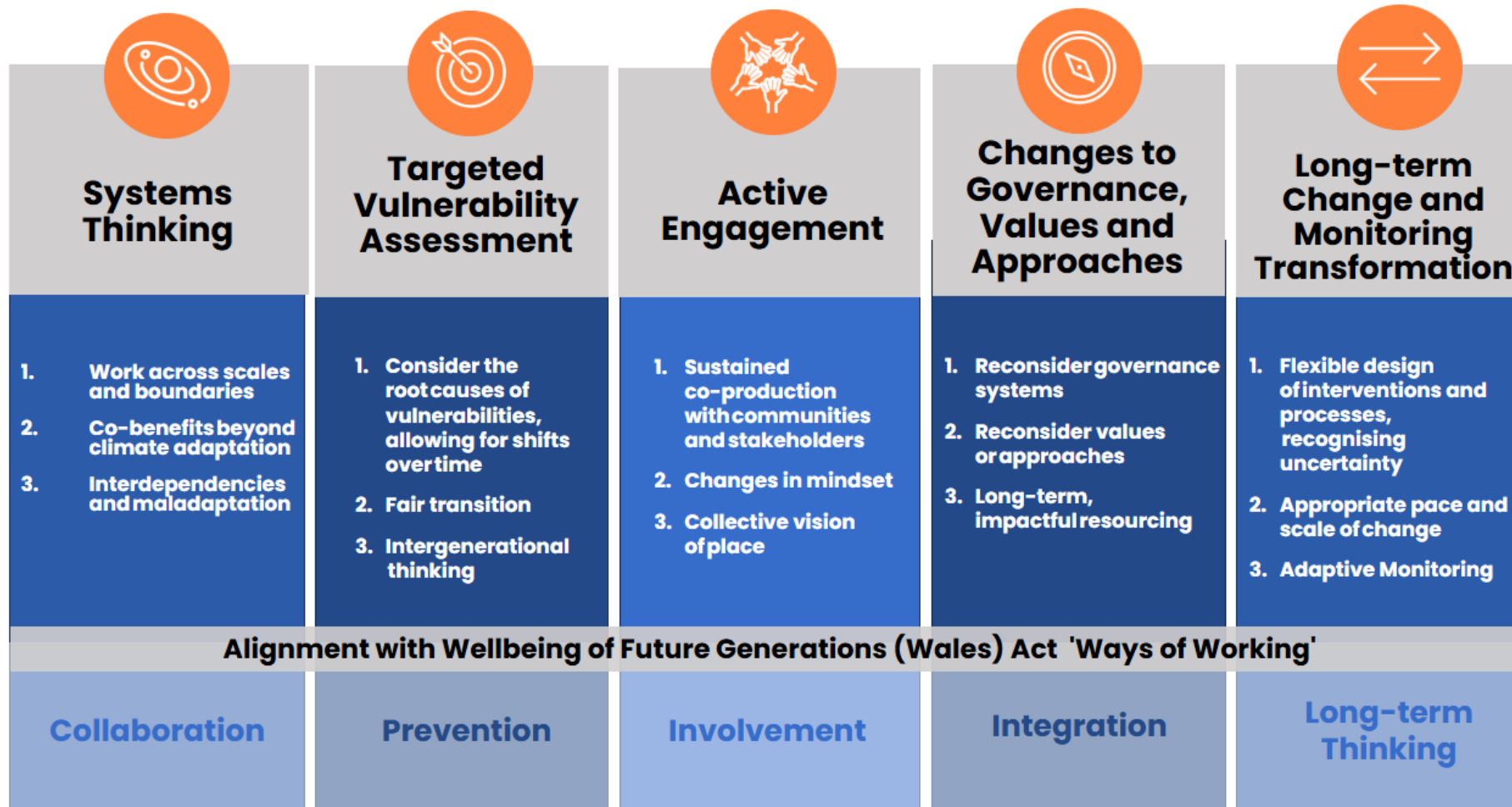
- *“Something positive and dynamic – **taking adaptation above conventional standard**”*
- *“Involves **changing mindsets** as well as structural and policy-driven change”*
- *“**Embedded, mainstreamed, at scale**. Rapidly building more resilience to climate risks with significant activity rather than doing the bare minimum. This could be at a large scale across multiple sectors, for example, how we create our built environment, but also how we support our natural world.”*

## Taking advantage of multiple benefits:

- *“It shouldn't just be about keeping heads above water. It shouldn't just be about making sure that things don't get worse. It should be about **seizing the opportunities** available.”*
- *“Not only manages effects of climate change but **also adds value** on top of that.”*

# 1.1 Key outputs

- Two reports for the Climate Change Committee to feed into the Well Adapted UK report
- New Vision and Design Framework to re-frame adaptation
  - SWM testing this in some of our work



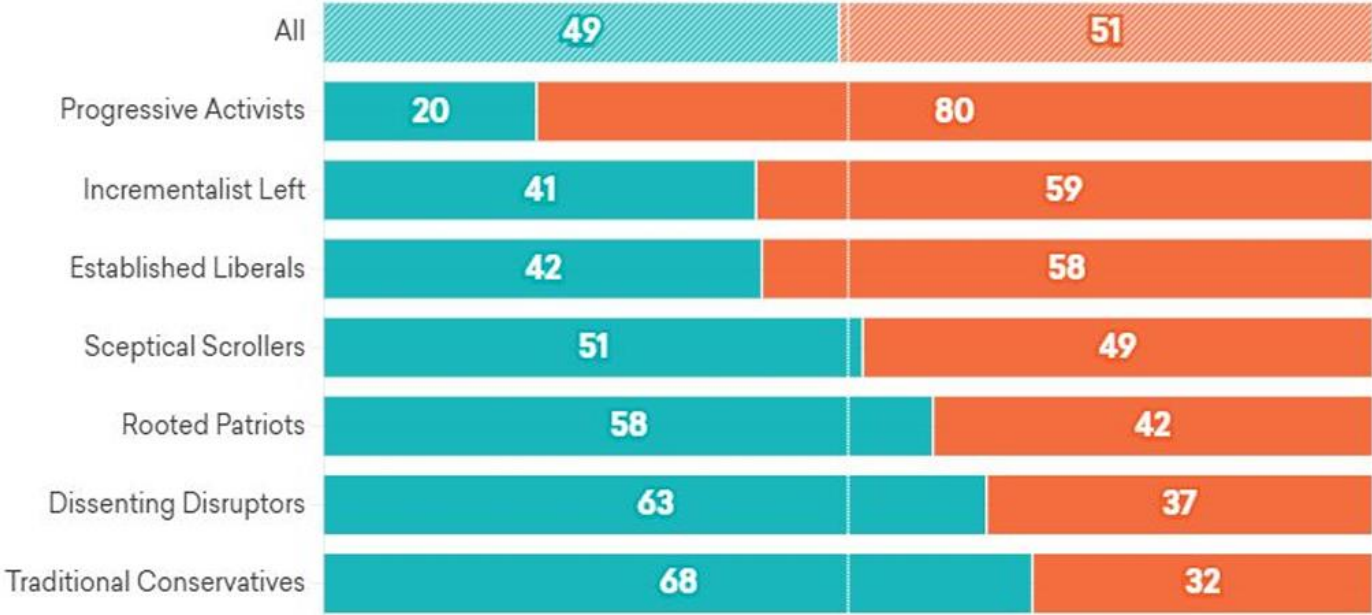
# 1.4 Public engagement on adaptation



How do different climate adaptation narratives resonate with different audiences across the UK, and what factors (e.g., perception of risk, lived experiences and values) influence their engagement, trust, and willingness to act?"

## When the UK is adapting to climate change, it's more important to focus on adaptation efforts which...

- Protect the way we live now as much as possible
- Take the opportunity to reshape the way we live in the future



Source: More in Common and Climate Outreach • June 2025

# 1.4 Public engagement on adaptation



Focus group	Climate adaptation & climate resilience	How will we know adaptation is happening?
Radical, Systems	<ul style="list-style-type: none"><li>● People who don't want to do anything</li><li>● Being forced to take action because of previous inaction</li></ul>	<ul style="list-style-type: none"><li>● More trees, better air quality</li><li>● more conversations about climate, a shift in thinking</li><li>● Fewer cars, renewable energy, more cycling</li></ul>
Conservation, Systems	<ul style="list-style-type: none"><li>● Not familiar terms</li><li>● Adaptation - More indoor events, changing the football season, better drainage, more green spaces</li><li>● Resilience - More like coping</li></ul>	<ul style="list-style-type: none"><li>● Built infrastructure</li><li>● Seeing it with your own eyes</li><li>● A government plan with funding</li></ul>
Conservation, Individual (Glasgow)	<ul style="list-style-type: none"><li>● Not familiar terms</li><li>● Adaptation - flood measures, reduce the impact, reduce plastics, more recycling, wind turbines</li></ul>	<ul style="list-style-type: none"><li>● Seeing benefits based on what's promised</li><li>● Better communication and signage of works</li></ul>
Conservation, Individual (Belfast)	<ul style="list-style-type: none"><li>● Adaptation - better drains, green energy, EVs, do more online (reduce footprint)</li><li>● Resilience - Putting up with a bad job</li></ul>	<ul style="list-style-type: none"><li>● Don't know what to believe, even experts don't agree with each other</li></ul>

# 1.4 Public engagement on adaptation

## Test narratives

### Paragraph 1 - Radical, systems

Our climate and **systems – whether it's health, housing, transport, energy or agriculture – are broken**. Nature is getting pushed beyond its limit and people who have the least suffer the most. Extreme heat in London hits the poorest people the hardest. In a changing climate, our best ally for a healthy and thriving society is a healthy and thriving environment, but **tackling the root causes** of these issues will require more than **a sticking plaster**. **Joined-up thinking** for climate adaptation has to include a **full overhaul of how our society function**s, by **strengthening social safety nets, improving housing and reducing inequality**. We need to **give the vulnerable people a voice** in how local decisions on adaptation are made and, **in the long term, restore the balance** between people and nature.

- **Pillar 1 - systems thinking**
- **Pillar 2 - targeted vulnerability**
- **Pillar 3 - active engagement**
- **Pillar 4 - changes to governance**
- **Pillar 5 - long term change & monitoring**
- **Summary phrases**

### Widely appealing words & phrases



- Working with nature
- Root causes
- Improving housing, reducing inequality
  - But not *social safety nets*
- Trees for schools, keep trains running
- Investing time and money now
  - But not *to cut losses in the future*
- Healthier, safer future for everyone
- 'Together'
- Full overhaul of how society functions
  - But not *full rest in how we live*
- New leadership
- Check what works
- Sticking plaster

## 2.2 Using climate data

- Two England-focused MACC Hub workshops designed to support public sector organisations in understanding and applying climate risk information in long-term planning and decision-making.
  - Took place in October 2025, one online focusing on Somerset as a case study, one in-person in London.
  - Also sessions in Wales (Feb 26) and Scotland (May 26), NI to come (Sept 26).
- Main purpose – to increase confidence in public bodies on **what** climate data is available, **which** tool should be used in which situation and **how** to use them.
  - Crudely – we want to empower public bodies to use the tools themselves so they don't have to pay expensive consultancies to do it for them.
- Focus on Met Office Local Authority Climate Service (LACS) (**HAZARD**), OpenCLIM (**RISK**) and Local Climate Action Tool (LCAT) (**ADAPTATION**)
- **Output** will be a synthesis report and follow up with attendees



# 4.2 Innovating through targeted funding



Led by:



## **A single competitive call**

Open call of £550k, what works for adaptation



## **Funding 10 projects for up to £55k each**

“Learning by doing” transformational adaptation.



## **Portfolio approach**

ensured broad range of topics, geographies, places, scales, sectors, policies



**Meaningful engagement** with communities and non-academic partners and place-based approaches



## **No more than 12 months in duration**



## **Monitoring and evaluation**

identify lessons learned, pathways to impact, good practice, and support synthesis activities

## 4.2 Assessment Headlines

151  
EOIs

106  
applications

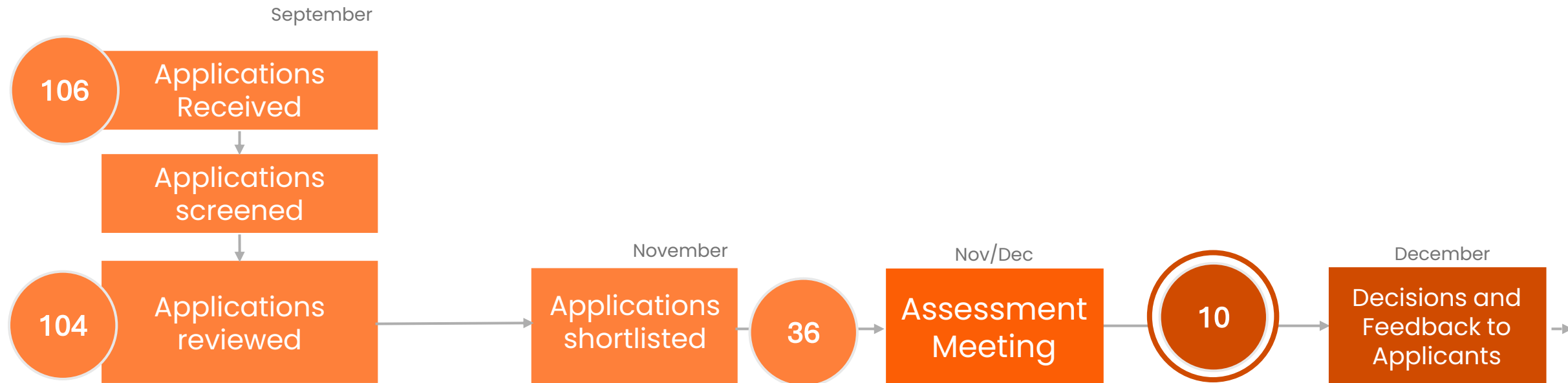
104 eligible  
applications

36  
Reviewers  
(16 Internal, 25  
External)

3  
Reviewers per  
application

29+7  
shortlisted  
applications

## 4.2 Assessment process



# 4.2 Scoring Criteria



Each criteria was scored 1-10



**Place-based Focus**



**Vulnerability Focus**



**Policy Links**



**Community Engagement**



**Measurable Outcomes**



**Impact, Scale and Replicability**



**Project Management & Feasibility**



**Addressing Inequities**



**Team Fit**

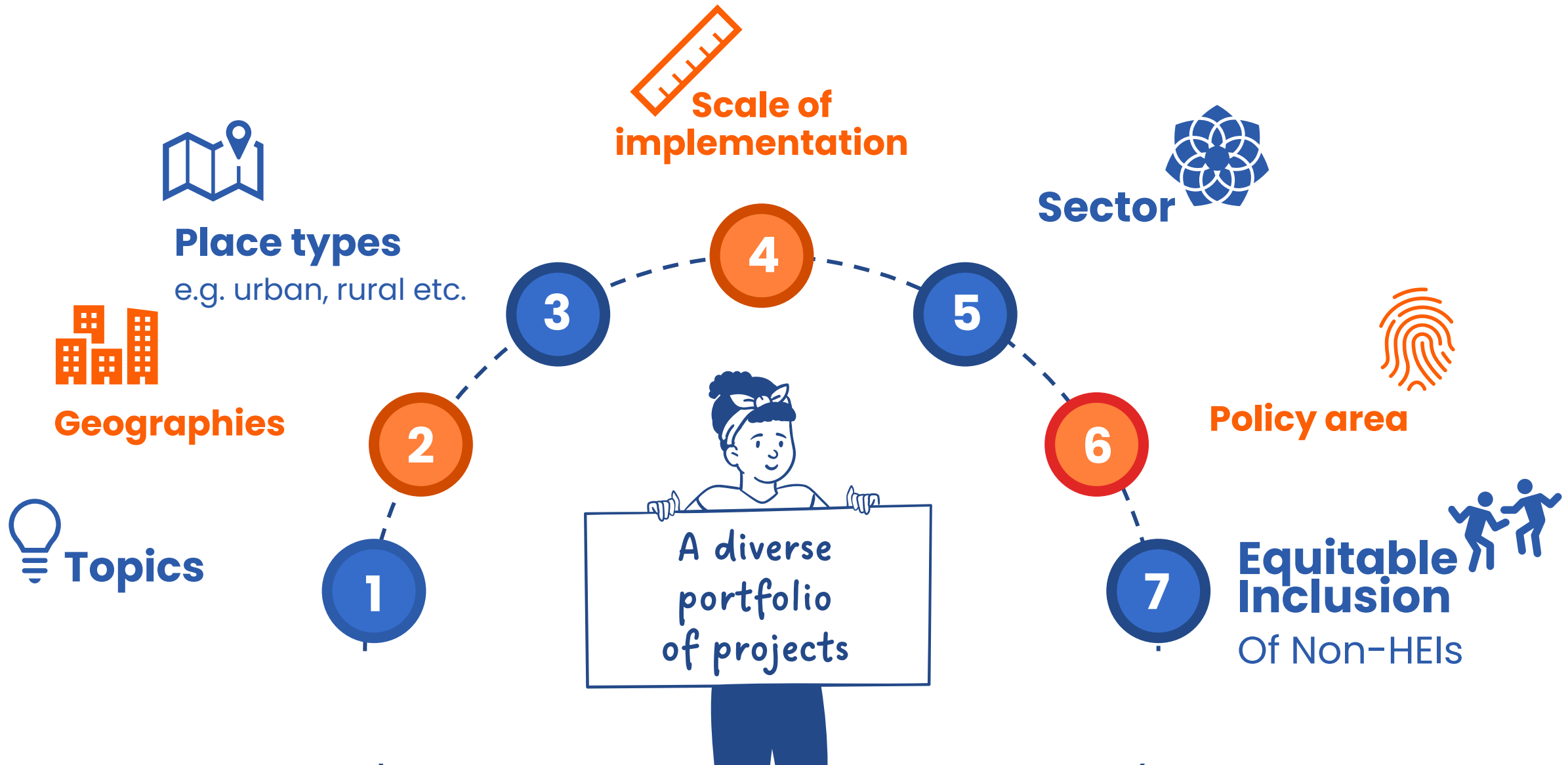


**Ethical Considerations**



**Value for Money/Budget**

# 4.2 Portfolio-based Approach



## 4.2 Successful projects

England

**Lead:** Royal Free London NHS Foundation Trust (the host of Thrive LDN)  
**Co-Lead:** Women's Environmental Network  
**Project Name:** Cultivating Resilience: integrating food justice and mental wellbeing

England

**Lead:** University of Reading  
**Co-Lead:** Wokingham Borough  
**Project Name:** Transforming Dementia Care through Climate Resilient Built Environment Systems

England

**Lead:** Uni of Brighton  
**Co-Lead:** West Sussex County Council, Environment and Public Protection (EPP)  
**Project Name:** Adapting Together: Building Local Resilience through Lived Experience and Partnership

England

**Lead:** KCL  
**Co-Lead:** Big Local North Brixton, Borough of Lambeth  
**Project Name:** Preventing avoidable demand on the healthcare system during summer heatwaves

England

**Lead:** Uni of Leeds  
**Co-Lead:** Yorkshire & Humber Climate Commission  
**Project Name:** Playgrounds of possibility: youth-led visions of transformational adaptation

England

**Lead:** University of Bristol  
**Co-Lead:** Somerset Wildlife Trust  
**Project Name:** Act Together to Adapt: Scaling community-led adaptation through institutional change

England

**Lead:** Sheffield Hallam Uni  
**Co-Lead:** The Green Estate, Sheffield City Council  
**Project Name:** Adapt-Ed: Climate Adaptation through Education

N. Ire.

**Lead:** QUB  
**Co-Lead:** Brink!, Founder Heritage & workshops partner  
Community growing & workshop partner  
**Project Name:** Brink! hedge school: Culture, history and place for local adaptation

Scotland

**Lead:** Uni of Strathclyde  
**Co-Lead:** Together Reaching Higher  
**Project Name:** Building Resilience, Building Community: Empowering Vulnerable Communities for Climate Action

Wales

**Lead:** Cardiff University  
**Co-Lead:** Play: Disrupt, Mencap Môn  
**Project Name:** Co-designing Climate Adaptation for Anglesey with People with Learning Disabilities

# Continue to engage!

- [Sign up](#) to the monthly newsletter
- [Join](#) some of our monthly webinars and regular events
- Let us know if you'd like more information on a particular focus of MACC
- Help us promote the planning conference to your planning colleagues
- [Upload](#) a case study, tool, report or guidance document to the MACC website



# MACC Hub

Together for Transformative Action

**THANK YOU!**

<https://macchub.co.uk/>