

Maximising UK Adaptation to Climate Change (MACC) Hub

Click here to join the mailing list:

<https://forms.office.com/e/bkMhAGL4WB>

Dr Helen Adams

King's College London

helen.j.adams@kcl.ac.uk



Unlocking transformative change for a well-adapted UK

1: Assess barriers to awareness and engagement with adaptation by diverse publics

2: Explore the efficacy of Welsh and Scottish approaches to wellbeing and future generations for adaptation

3: Increase understanding of system complexity

4: Identify and address aspects of policy, legislation and regulation that hold back the adaptation vision

5: Enhance the accessibility and understanding of climate model results for decision-makers



Community members using the Connswater Community Greenway

Understanding and translating ‘what works’ on adaptation

Pillar 1: Building skills and partnerships

Meaningful engagement to strengthen knowledge and capacity across the UK

Pillar 2: Data and knowledge generation

Generating knowledge that advances adaptation action: local risk maps, knowledge sprints and Hub-led research

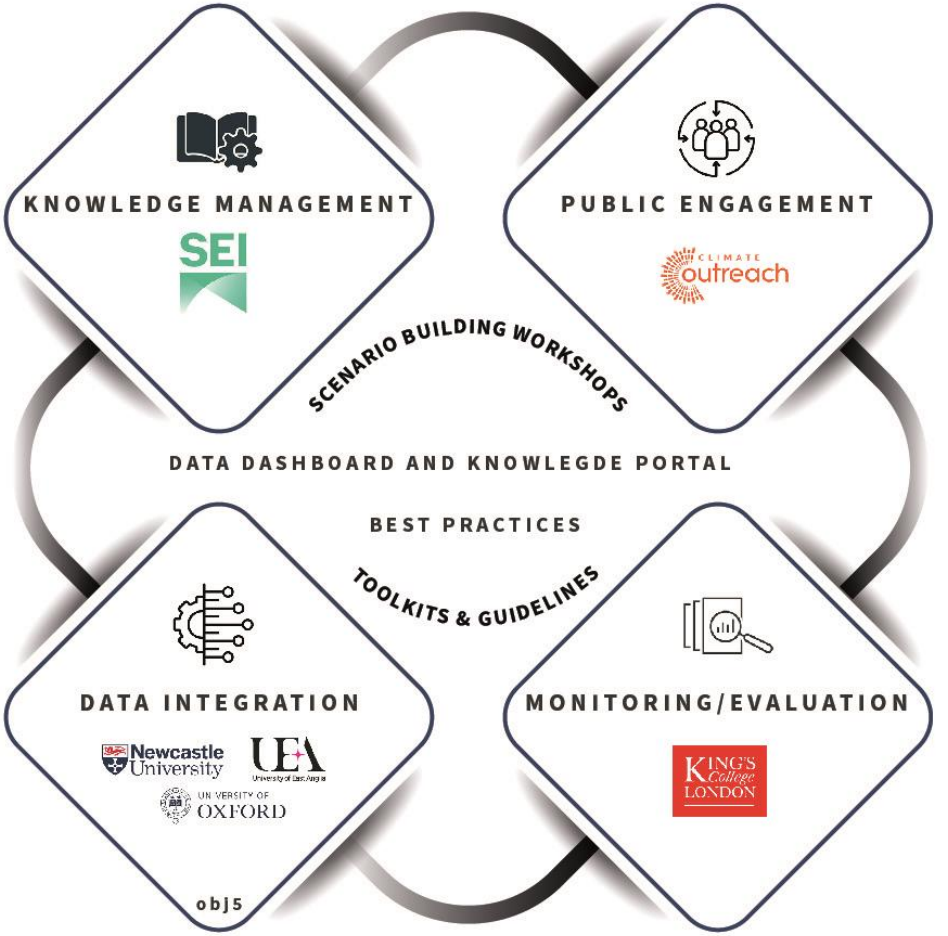
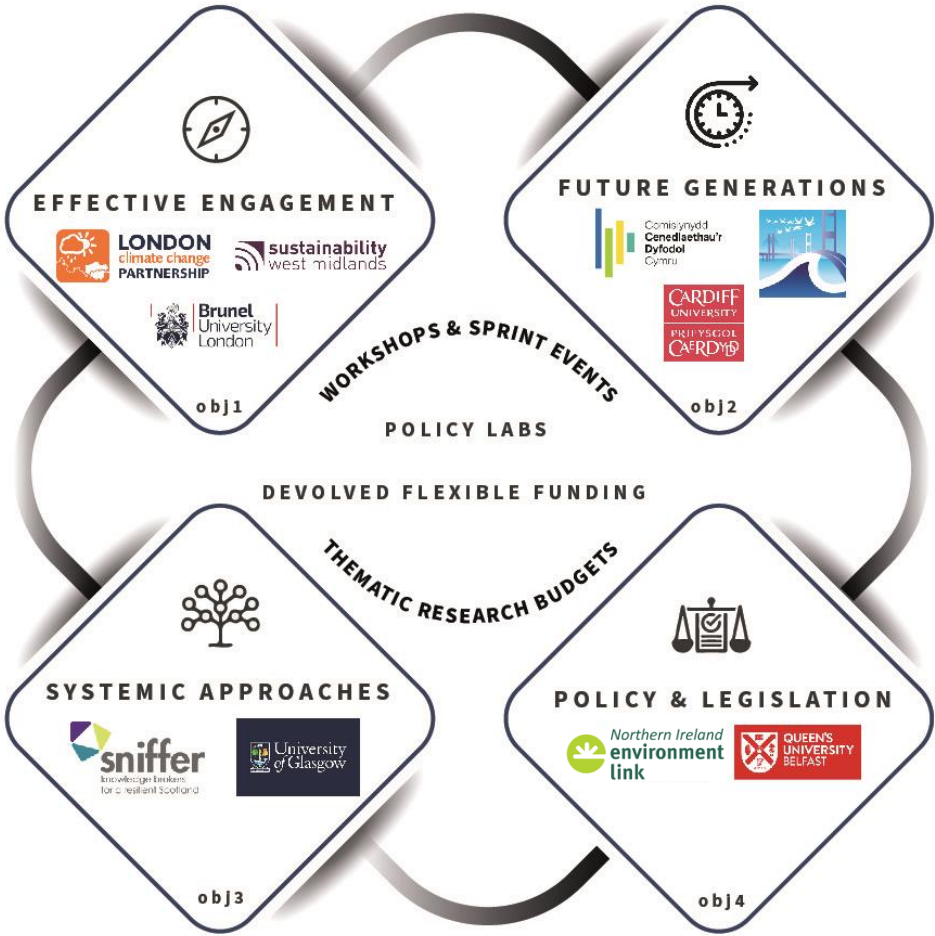
Pillar 3: Linking knowledge, policy and practice

Building connections between policy and practice through a Policy Response Unit, Policy Labs, and a Knowledge Portal.

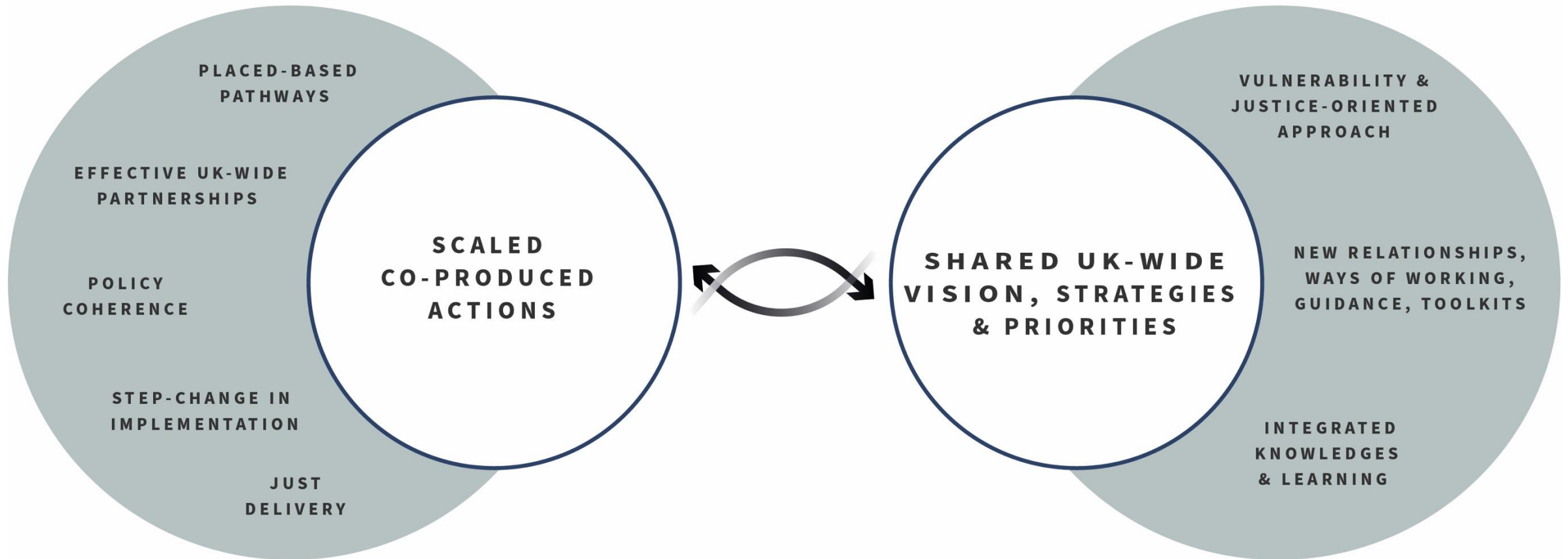
WP4: Innovating through targeted funding

Trialling transformative adaptation projects through an open call flexible fund

Building a UK-wide adaptation community



Creating the enabling conditions for transformative adaptation in the UK



Call for Evidence

MACC Hub – Activity 1.1

- **Deadline for Submission:** Friday 6th December 2024
- **Email:** stephenjones@climatenorthernireland.org.uk

#	Research Question	Inclusion Criteria	Exclusion Criteria
1	<p>What are the levers of change for adaptation in the UK and its regions (including any assessments of barriers or opportunities)?</p> <p><i>Consider following prompts when scanning for relevant sources:</i></p> <ol style="list-style-type: none"> UK-wide: <ol style="list-style-type: none"> Existing policy assessments and progress assessments (including role of local government) 'Sectoral' (aligning to CCC 13 Adaptation Monitoring Maps) Other regionally specific levers, barriers or opportunities: <ol style="list-style-type: none"> Legislative, structural or regulatory Geographic Social Financial Data and Evidence 	<ol style="list-style-type: none"> Expectation - Best existing information at a UK, regional and sectoral level Location – United Kingdom, regional reports from England, Scotland, Wales & NI, some local-level information if lessons are relevant for other areas or in areas of significant risk Publicly available Peer-reviewed or grey literature, from relevant transboundary research projects and statutory and professional bodies. Prioritising synthesis over individual studies. 	<ol style="list-style-type: none"> Sources not in English Sources from outside the UK Sources before 2020
2	<p>What guidance and examples are available on the topic of 'Transformational Adaptation' which can help us define it for use through the Hub?</p> <p><i>Consider following prompts when scanning for relevant sources:</i></p> <ol style="list-style-type: none"> Guidance or synthesis on the idea of Transformational Adaptation from UK and around the world Examples of transformational adaptation from UK and around the world Examples of transformational change/social movements more broadly 	<ol style="list-style-type: none"> Expectation - Best existing information on Transformational Adaptation. Location – Priority for United Kingdom information and regional/local information from England, Scotland, Wales & NI, but international information is acceptable. Local-level information is permitted if lessons are relevant for other areas. Publicly available Peer-reviewed or grey literature 	<ol style="list-style-type: none"> Sources not in English Sources before 2014

Thank-you for your support